



Premium Energy
Storage System

Energy Storage System

From Modular Pack to Turnkey Solution

UZENERGY



UZ ENERGY

Premium Energy Storage System

Who
We Are



searching “UZ ENERGY” for more recent info

UZ ENERGY LIMITED was founded in 2013, with head quarter in Shenzhen, China. UZ Energy is an innovative energy storage solution enterprise with global impact. With a comprehensive portfolio of products, solutions and services, UZ Energy promises the optimized performance, reliability and return on investment of energy storage installation, from residential-scale facility to grid-scale power plants.

We leads by innovation at the basis of professional research coming with an professional R&D team, to provide products designed, tested and manufactured according to the highest global standards. We have established long-term strategic cooperation with the best-in-class battery manufactures and professionals with skillsets and expertise in Science Engineering and Technology to develop products with global relevance.

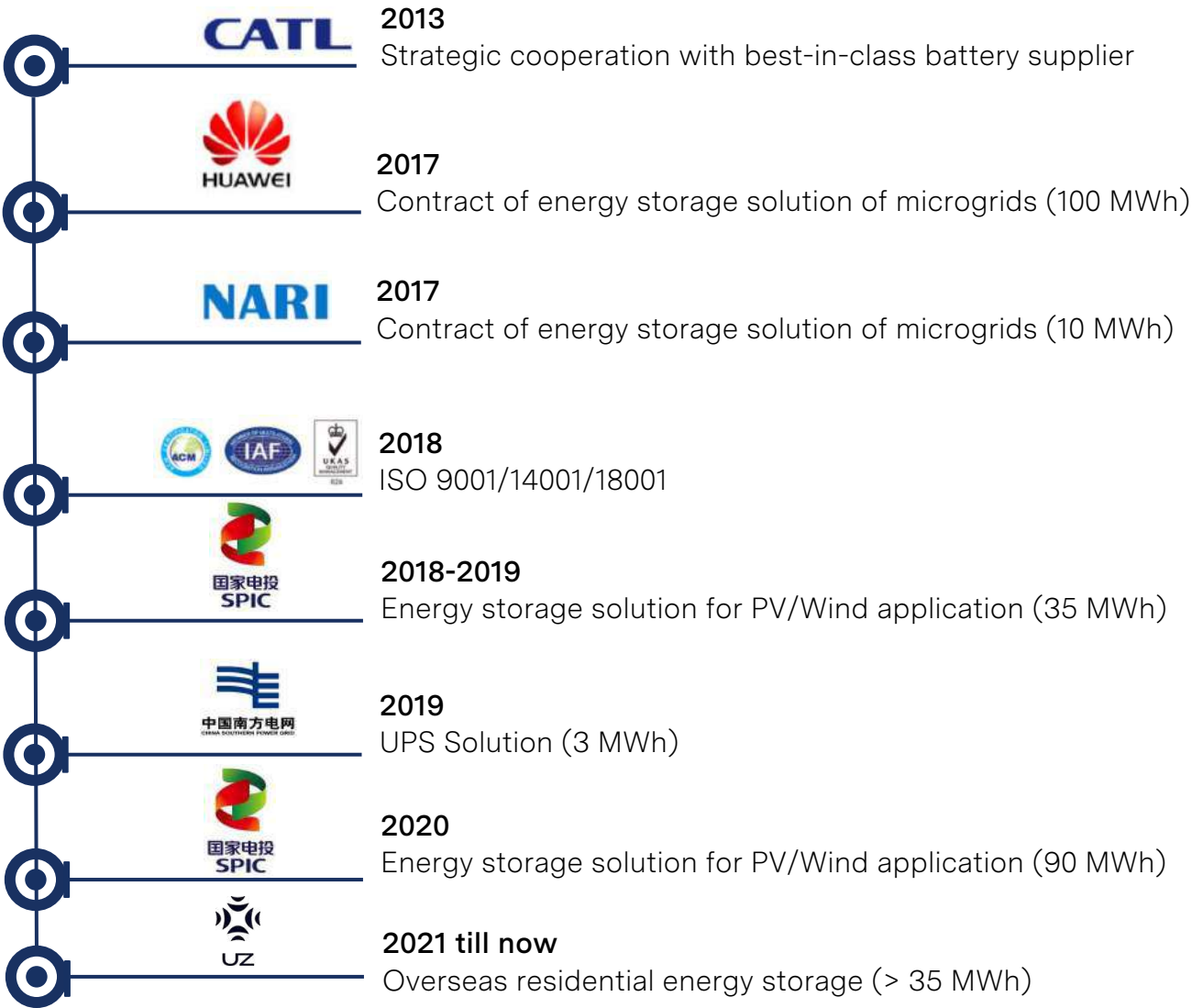
Our commitment is becoming leading facilitator in the global shift towards future energy storage. With a mission to accelerate the world's transition to sustainable energy. We commercially advance and deploy clean energy technologies, promoting sustainability in developing projects that deliver innovation to move the world forward.

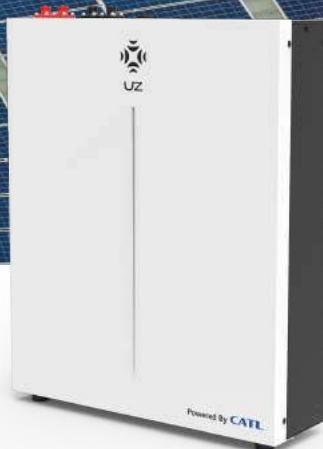
With years of combined experience in providing clean energy solutions, and having partnered with the world's clean energy companies, UZ Energy is uniquely positioned to guide your complex projects from inception to implementation.



MILESTONES

BUILDING BLOCKS TOWARDS A GREAT FUTURE



General Installation ¹Vertical Installation ²

Scan for more info

SPECIFICATION (Supporting multiple-parallel mode up to 16 sets)

Model	Power Lite Series
Battery Type	LiFePO4
Nominal Battery Energy	5.12 kWh
Nominal Capacity	100 Ah
Nominal Voltage	51.2 V
Working Voltage Range	48-57.6 V
Nominal Current (Recommended)	50 A (0.5 C)
Max Continuous Discharging Current (Cell)	100 A (1 C) at assigned condition
Net Weight	44.5 kg
Dimension [W*D*H]	440*530*132 mm
Working Temp. Range	0-50 deg C
Designed Life-span	6000 Cycles ³
Protection Level	IP20
Communication	CAN/RS485/Dry Contact/Wi-Fi
Calendar Life	10 Years ³
Certificate	TUV/IEC 62619/CE-IEC 61000 IEC 62040/UN38.3/UL 1973/UL 9540A ⁴

¹: Can be installed by using F series Rack or Fast Installation Component

²: Can be installed by using Vertical/Wall-Mounting Installation Component

³: Working Condition 0.5 C @ 25 deg C, 80% DoD, 1 cycle per day

⁴: UL certificates are applied to our North-American Version

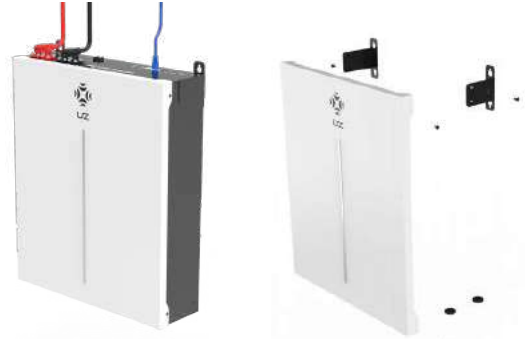


Subscribe our channel by **SCAN** the above QR code or searching “UZ ENERGY” for more recent info

Agile Installation Accessories



Stacking Kit (H100)



Vertical Installation Kit (C100)



Wall-Mounting Kit (C300)



Quick Installation Rack (R100 IP 20 & R100A IP54)

Premium Case Protecting Level IP65



Pre-wired IP 65 out case
quick installation (P400A)





Power in Your Hand
Log into UZ Energy Portal Today



POWER LITE Are Always Evolving Battery Data Monitoring

Focuses on providing technology and platform for
energy flow connecting, people to people.



Now available on the following version. Contact our professional personal for more info.



☐ Non-US Market



☐ US Market



POWER LITE PLUS

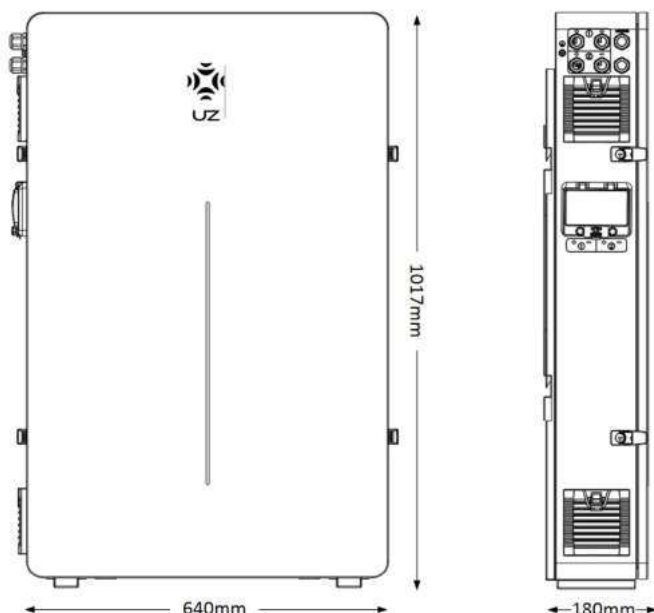


Shine on.

- ❑ LFP Battery Inside
Most Safe Battery Technology
- ❑ High Energy Density Design
- ❑ Indoor/Outdoor Rated
Either IP54 or IP65
- ❑ Plug & Play
Pre-wired w/ approved DC isolator
- ❑ Slim-Steady Design
- ❑ Compatible with various inverter brands



Letting people shine both day and night, by making it easy to capture, store and enjoy the natural power of the renewable energy



POWER LITE PLUS



Scan for more info

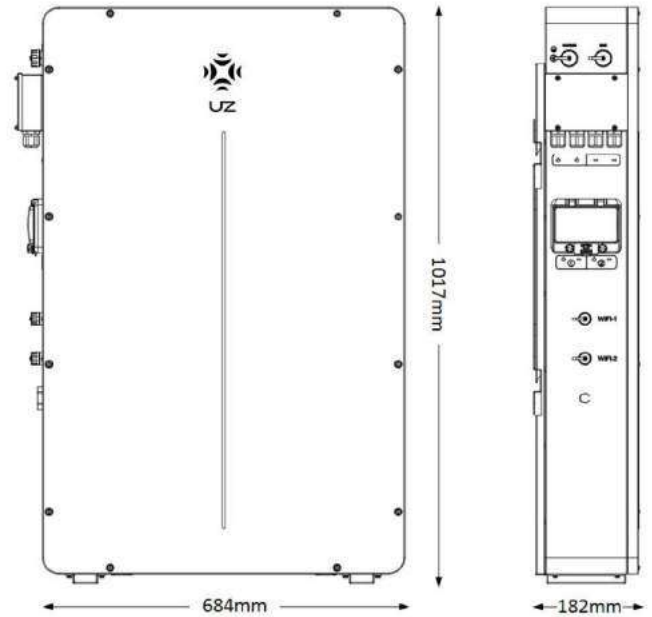
Battery Enclosure	
Battery Type	LiFePO4
Number of Battery Units	1 or 2 sets of Power Lite (L051100-A/A1/B/D)
Nominal Battery Energy	5.12 kWh, 1 set of 5.12 kWh Power Lite inside 10.24 kWh, 2 sets of 5.12 kWh Power Lite inside
Nominal Voltage	51.2 V
Working Voltage Range	48-57.6 V
Nominal Current (Recommended)	50 A, 1 set of 5.12 kWh Power Lite inside 100 A, 2 sets of 5.12 kWh Power Lite inside
Rated Power	2.5 kW, 1 set of 5.12 kWh Power Lite inside 5 kW, 2 sets of 5.12 kWh Power Lite inside
Cable Specification	
Battery Cable Rating	100 A, each cable
Battery Cable Type	4 AWG or 25 mm ²
General Data	
Dimension [W*D*H]	640*180*1017 mm
Mounting and Weight- Empty	Approx. 25 Kg rear fixing
Mounting and Weight- w/ Battery	Approx. 70 kg, 1 set of Power Lite inside Approx. 115 kg, 2 sets of Power Lite inside
Working Temp. Range	Based on battery (Power Lite Series) Specification
Protection Level	IP54/IP65
Communication	CAN/RS485/RS232/Dry Contact
Certificate (Battery, Power Lite Inside)	TUV/IEC 62619/CE-IEC 61000 IEC 62040/UN38.3/UL 1973/UL 9540A (pending)
Calendar Life	10 Years ¹

¹: Working Condition 0.5 C @ 25 deg C, 80% DoD, 1 cycle per day



Subscribe our channel by **SCAN** the above QR code or searching "UZ ENERGY" for more recent info

Upgraded accessories made for POWER LITE PLUS Protecting Level IP65



Premium Pre-Wired
IP 65 Out Case
(P200A)





searching “UZ ENERGY” for quick offer

Suppliers ▾ uz energy



Search

A world-wide partnership and compatibility

✓ Official-listed guaranteed



✓ In-house testing guaranteed



Power Lite Series ensure the largest scope of compatibility across the inverter brands.
More to be updated.



HV Battery Pack HV System (Single Cluster)

HV System
(Clusters in Parallel)

Scan for more info

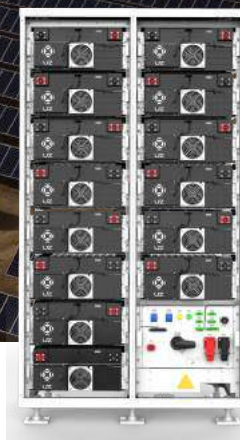
SPECIFICATION

Model		Power Swift Series	
Battery Type		LiFePO4	
Nominal Battery Energy		25-50 kWh	
Nominal Capacity		100 Ah	
Nominal Voltage/Pack		51.2 V	
Working Voltage Range	25 kWh	240-288 V	40 kWh 384-460 V
	30 kWh	288-345 V	45 kWh 432-518 V
	35 kWh	336-403 V	50 kWh 480-576 V
Nominal Current (Recommended)		50 A (0.5 C)	
Max Continuous Discharging Current (Cell)		100 A (1 C)	
Net Weight		Approx. 255-345 kg	Approx. 390-480 kg
Dimension [W*D*H]		550*580*1400 mm	550*580*1800 mm
Working Temp. Range		0-50 deg C	
Designed Life-span		6000 Cycles ¹	
Protection Level		IP20	
Communication		CAN/RS485/RS232/ETH/Dry Contact	
Certificate (Cell Level)		TUV/IEC 62619/CE-IEC 61000/UN38.3	
Calendar Life		10 Years ¹	

¹: Working Condition 0.5 C @ 25 deg C, 80% DoD, 1 cycle per day.



POWER MEGA



SPECIFICATION

Scan for more info

Model		Power Mega Series	
Battery Type		LiFePO4	
Nominal Battery Energy		125-304 kWh	
Nominal Capacity		280 Ah	
Nominal Voltage/Pack		64 V	
Working Voltage Range	125 kWh	392-504 V	232 kWh 728-936 V
	143 kWh	448-576 V	250 kWh 784-1008 V
	161 kWh	504-648 V	268 kWh 840-1080 V
	179 kWh	560-720 V	286 kWh 896-1152 V
	196 kWh	616-792 V	304 kWh 952-1224 V
	214 kWh	672-864 V	
Nominal Current		140 Ah (0.5 C)/280 Ah (1 C)	
Max Continuous Current		280 A (1 C)	
Net Weight		Approx. 1030-1730 kg	Approx. 1870-2430 kg
Dimension [W*D*H]		2300*1200*1000 mm	
Working Temp. Range		0-50 deg C	
Designed Life-span		8000 Cycles ¹	
Protection Level		IP20	
Communication		CAN/RS485/RS232/ETH/Dry Contact	
Certificate		TUV/IEC 62619/CE-IEC 61000/IEC 62477 UL 1973/UL 9540A/UN38.3	
Calendar Life		15 Years ¹	

¹: Working Condition 0.5 C @ 25 deg C, 80% DoD, 1 cycle per dav.

Powered By **CATL**

UZENERGY



www.uzenergy.com

Shine on.



COMMUNITY

<http://forum.uzenergy.com>



My Dear Friends,

Scan for more info

[UZ ENERGY](#) is a leading Energy Storage System manufacture and integrator, with more than 100 MWh ESS project over the world, and has established great connections with the main-stream inverter companies, solar panel manufacture as well as the tier-1 battery supplier globally. We would be very happy to dedicate ourselves into this fantastic era and embrace the future with renewable energy. More info can be traced via our [LinkedIn](#).

UZ Energy Community is aimed at building a convenient place for all system installers and DIYers to share the information and understanding of Energy Storage Systems (ESS).

In this community, many sections are pre-set, including the [Showcase](#) of your own ESS complete solution, advanced [Tech Vision](#) regarding solar, inverter and battery would be discussed from researchers, industrial professionals and DIYer. We hope you could have much fun and amazing ideas from each other and generate greater content and concept accordingly.

Last but not least, any technique problems or enquires of UZ Energy ESS products can be post via [Feedback](#). Engineers or UZ Energy will revert you before you know it.

Please register via forum.uzenergy.com and say hello to the community members all around the world via section of [Newcomers](#).

Wherever you find your energy.
Shine on.

Peter. W
Founder of UZ Energy Community



Subscribe our channel by **SCAN** the above QR code or searching "UZ ENERGY" for more recent info



Wherever you
find your energy.
Shine on.